



# INDUSTRY BROCHURE



**Leverage the expertise** of hundreds of industry-focused researchers with specialist equipment and facilities.



A suite of **training supports** offered under the TU RISE initiative are aimed at assisting your business in research & innovation endeavours, including **Grant-writing workshops**, Digital Masterclasses, etc.



**Access R&D solutions** to develop new products or services, or optimisation of a process, for business and industry.



We support projects of all **sizes**, from a **diverse range of companies**.



## Executive Summary:

South East Technological University has a strong commitment to building lasting relationships with the business world, and its level of interaction with the local, national and international business community is growing each year.

The university has developed a wide network that brings together inventors, researchers, venture capitalists, business angels and entrepreneurs across a spectrum of industries from multinationals to SME driving the development of the knowledge economy in the South-East region and beyond.

Research by its nature is collaborative. SETU is open to, and actively encourages research collaborations with academic, public sector and industry partners, and has a keen focus on the translation of research knowledge into tangible socio-economic outputs.

Collaboration can take a number of forms, based on the needs of the external client companies and the level of interaction with the university or research group:

- Joint research & development projects
- Contract research
- Licensing of existing technologies or know-how
- Access to specialist equipment and research facilities
- Access to funding to support innovation through Innovation Partnerships/Vouchers
- Accessing the specialist knowledge of our academic and research community
- Accessing industry relevant training & supports.

SETU's regional mission to address the regional brain drain; support economic, societal and cultural development; meet the expectations of employers; and deliver green and digital skills is facilitated in part by the **TU RISE** project. Collaboration with enterprises, regional clusters, networks and other stakeholders (e.g. IDA, EI, WCC, LEOs) is integral to the **TU RISE** project.

# SETU Industry Brochure



## Table of contents:

TU RISE	1
Training & supports offered by the RSU	3
Key funding opportunities	4
Enterprise Ireland Technology Gateways	7
More information about the Research Support Unit and TTO	8
Why engage with SETU?	9



## TU RISE

**TU RISE is co-funded by the Government of Ireland and the European Union through the Southern, Eastern & Midland and the Northern & Western Regional Programmes, 2021-2027.** The scheme is **designed to enhance central research functions** in higher education institutions in the technological university sector to **further institutions' engagements with their regions.**

The purpose of the scheme is to *establish, strengthen, and systemise research and innovation offices to enable greater and more structured engagement with local and regional enterprises and community stakeholders.*

SETU has been awarded €13.6 million in funding, enabling us to build on current successes and **further engage** with our region, providing leadership in research and innovation.

This project will see the significant strengthening of this ecosystem through **facilitating elevated research and innovation performance** in areas of key economic importance for the region, as identified in the regional enterprise plan. These are **Advanced Manufacturing, ICT, Pharmaceuticals, Agriculture, Eco-Innovation, and Financial Services.**

The project also aims to create greater regional impact from its research by investing in the further development of regional partnerships comprising enterprise partners and researchers, facilitated by the university's central supports. The partnerships to be sustained through TU RISE will focus on **the delivery of regional upskilling objectives** in relation to **climate action, sustainability, and digitalisation.**

SETU will build on existing entrepreneurship development activities to develop regional entrepreneurs, consistent with regional economic planning, as envisaged in the SETU strategic plan.





## TU RISE Initiatives:

To bolster Research & Innovation capacity within SETU and in regional industry, attracting talent and elevating engagements with enterprise via collaborative projects and knowledge transfer, the initiatives below will be developed/offered as part of the TU RISE project:



### *In addition:*

- We will rollout a **Regional Economic and Innovation Roadmap & Assessment Framework** to regional industry stakeholders.
- Research **dissemination, communication and networking** are a crucial part of TU RISE. **A Research & Innovation Showcase event** will be held each November at SETU, and an **annual newsletter** will be prepared & shared with industry stakeholders.
- We will develop and run **Regional Grand Challenges events**.
- SETU researchers, postdoctoral fellows and PhD students will undertake **enterprise engagement and readiness** training.
- We will continue to offer **enterprise co-funded scholarships**.

# Training courses & supports offered by the Research Support Unit:

Under TU RISE, we aim to bolster R&I capacity within SETU and in regional industry, we aim to attract talent and elevate engagements with enterprise via innovative, collaborative projects and knowledge transfer.

## **Strategic Grant-writing Workshops:**

Contemporary grant-writing training will be offered to SETU researchers and industry professionals.



## **Professional doctorates in Design:**

serving the Medtech/Pharma, Engineering and ICT sectors.



## **Training in Intellectual Property:**

Researchers can avail of Intellectual property training for optimal industry collaboration.



## **Digital masterclasses:**

Level 9 Optimisation and Digital Masterclasses will be available to industry, aimed at helping companies to manage digitalisation and to keep up to date with the ever-changing digital landscape.



## **Supports offered by the Research Support Unit:**

- Graduate support (admission, award management, stipend control & progression)
- Academic-Enterprise Liaisons working in the three thematic areas: Engineering and Technology, Eco-innovation and Health and Wellbeing.



For more information on TU RISE, or to enquire about accessing supports, please contact our team:



Email: [TURISE@setu.ie](mailto:TURISE@setu.ie)

Web: <https://www.setu.ie/research-innovation/tu-rise>

## Key funding opportunities:



### National funding:

#### Enterprise Ireland:

The **Innovation Partnership Programme** encourages Irish-based companies to work with Irish research institutes for mutually beneficial engagement. A company benefits in terms of its growth, the evolution of its strategic research and development and the creation of new knowledge that it can use to generate commercial advantage. This funding provides up to 80% of the cost of research work towards the development of new and improved products, processes or services, or the generation of new knowledge and know-how. Visit: <https://www.enterpriseireland.com/en/supports/innovation-partnership-programme>

With the **Innovation Voucher** programme, SMEs can build connections with Ireland and Northern Ireland's publicly funded Knowledge Providers (i.e. higher education institutes, public research bodies) to explore business problems and uncover opportunities. For more, visit: <https://www.enterpriseireland.com/en/supports/innovation-voucher>

The **Agile Innovation Fund** allows companies access up to 50% funding to support innovation projects with a total cost of up to €300,000 – with a streamlined application process, simpler documentation and fast-track approval. So you can engage in the innovation activity necessary to make your international growth ambitions a reality. Visit: <https://globalambition.ie/supports/innovation-support/the-agile-innovation-fund/>

### Irish Research Council (IRC)\*:

#### Enterprise Partnership Scheme (Postgraduate):

This award will support suitably qualified research masters and doctoral candidates pursuing, or intending to pursue, full-time research in any discipline. The duration of these awards ranges from one to four years and comprise:

- a stipend of €22,000 per annum;
- a contribution to fees, including non-EU fees, up to €5,750 per annum; and;
- eligible direct research expenses of €3,250 per annum.

This award is a great way for industry employees to upskill and to pursue research into their chosen discipline.

#### Enterprise Partnership Scheme (Postdoctoral Fellowships):

This scheme provides researchers with the opportunity to pursue research in collaboration with enterprise, while based at SETU. The award comprises:

- a salary of €42,783\* in the first year of the award and €43,371\* in the second year of the award;
- employer's PRSI contribution; and
- eligible direct research expenses of €5,000 per annum.

The enterprise partner is expected to commit €17,224\* in the first year of the award and €17,502\* in the second year of the award towards the cost of funding the researcher. The Irish Research Council contributes the remaining funds.

\*Figures are correct at time of publication.

#### Employment-based Postgraduate Programme:

The Irish Research Council's Employment-Based Postgraduate Programme provides awardees with the opportunity to pursue research in collaboration with a higher education institution while based in, and employed by, their employment partner.

## Science Foundation Ireland (SFI)\* Industry Collaboration Funding:

Science Foundation Ireland (SFI) has a range of funding opportunities specifically tailored for industry-focused research. This ranges from seeding an initial engagement with an academic group to large-scale collaborative research endeavours. SETU researchers have been successful in receiving SFI Funding on many occasions in the past number of years.

To find out more, and to read case studies of past projects, please visit: <https://www.sfi.ie/funding/industry-collaboration/>

\*NOTE: SFI and IRC will merge in 2024, to form 'Research Ireland'.

## Environmental Protection Agency (EPA) Ireland:

The EPA is at the front line of environmental protection and policing. As part of its wide range of functions, the EPA manages an environmental research programme that delivers essential scientific support for environmental policy development, implementation and broader decision making.

The EPA Research call for 2024 opened for applications on 4th April 2024, and will support innovative research projects to support policy- and decision-making, addressing environmental, climate change and sustainability challenges.

Details on EPA Research 2030, its hubs and all other aspects of the EPA Research Programme can be found on the [Research](#) section of their website.

*SETU has also been successful under the Environmental Protection Agency's Competitive Research Call, recently securing two awards, Cúpla Trá and GRaDE, which allows our talented researchers to further their important, societally relevant and interdisciplinary work in the areas of climate change and the environment.*

## European funding:

**Horizon Europe** is the EU's key funding programme for research and innovation with a budget of €95.5 billion.

The programme facilitates collaboration and strengthens the impact of research and innovation in developing, supporting and implementing EU policies while tackling global challenges. It supports creating and better dispersing of excellent knowledge and technologies. It creates jobs, fully engages the EU's talent pool, boosts economic growth, promotes industrial competitiveness and optimises investment impact within a strengthened European Research Area.

Horizon Europe provides funding for many different areas of research, and is specifically aimed at addressing global and environmental challenges, while improving European industrial competitiveness.

**SETU has an impressive track record in obtaining competitive research and innovation funding from both national and European funding bodies. SETU's predecessor WIT had the highest drawdown among Institutes of Technology and Technological Universities under Horizon 2020.**

***SETU currently has the highest funding drawdown in this sector under Horizon Europe.***



Horizon Europe is objective-driven and seeks ambitious partnerships with industry. Pillar II objectives are in the areas of;

- **Health**
- **Culture, Creativity & Inclusive Society**
- **Civil Security for Society**
- **Digital, Industry & Space**
- **Climate, Energy & Mobility**
- **Food, Bioeconomy, Natural Resources, Agriculture & Environment**

For more information, please visit: [https://research-and-innovation.ec.europa.eu/funding/funding-opportunities/funding-programmes-and-open-calls/horizon-europe\\_en](https://research-and-innovation.ec.europa.eu/funding/funding-opportunities/funding-programmes-and-open-calls/horizon-europe_en)

### Marie-Curie Sklodowska Actions

(MSCA), (Pillar I of Horizon Europe), are open to all domains of research and innovation and encourage international cooperation to set-up strategic collaborations with industry.

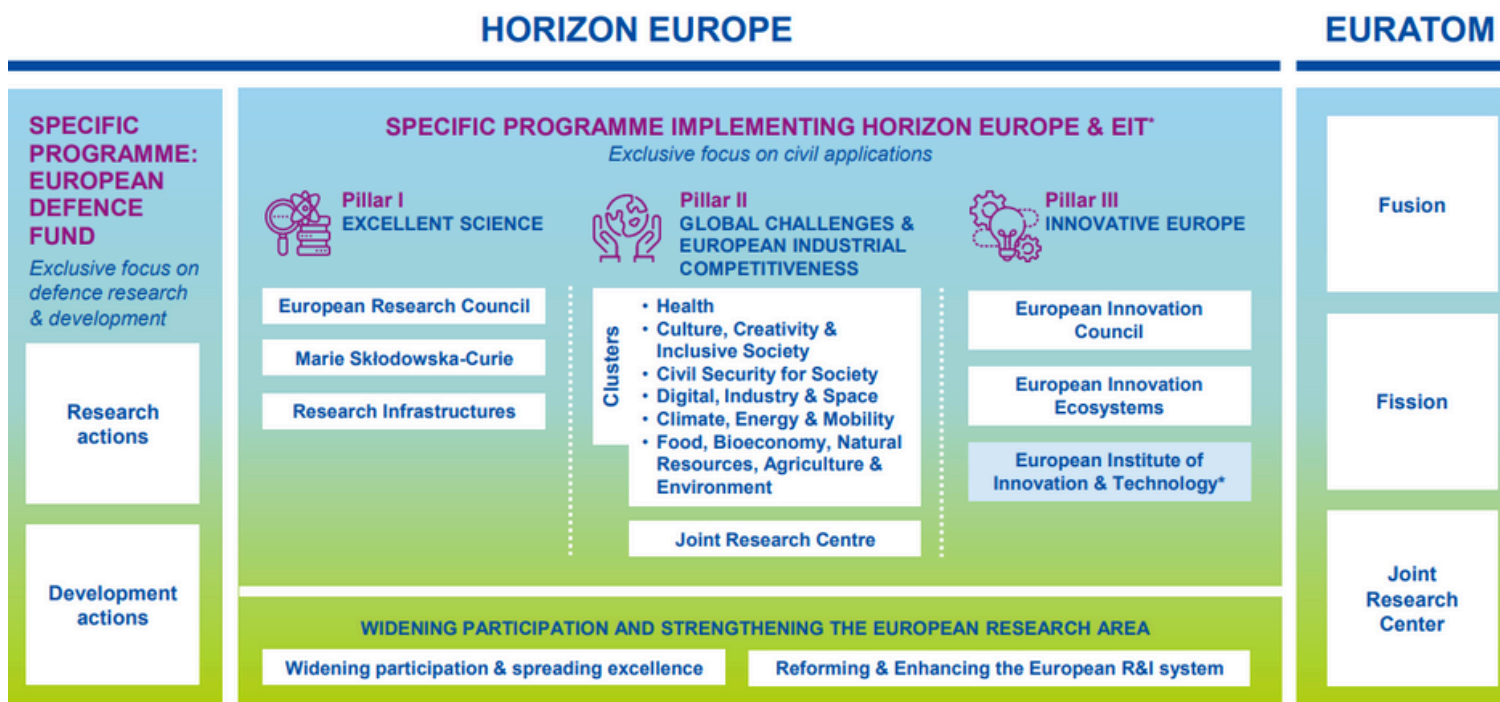
MSCA offers funding for:

- Staff Exchanges,
- Postdoctoral Fellowships,
- MSCA COFUND, and
- MSCA & Citizens Events.

For more information, please visit, <https://marie-sklodowska-curie-actions.ec.europa.eu/>

### The 'ENTIRE' European Digital Innovation Hub

(EHIB) 'Discovery & Assessment' one-day visit enables companies to meet with the EHIB team, discover and experience the capabilities of new technologies and discuss the impact they could have on their business. Companies can discuss their requirements and visions, dive into the latest technologies and capabilities, visit a lab and explore the potential for collaboration. Visit <https://entire-edih.ie/> or contact Hazel Peavoy at [hazel.peavoy@waltoninstitute.ie](mailto:hazel.peavoy@waltoninstitute.ie)



\* The European Institute of Innovation & Technology (EIT) is not part of the Specific Programme

South East Technological University is home to four Enterprise Ireland Technology Gateways. These Gateways are **state-of-the-art hubs of Research and Innovation excellence**. Researchers at our Technology Gateways are **industry-focused**, using on-site specialist equipment and facilities, focused on working with industry to develop **new processes, products and services**.

Our Gateways work on projects of all sizes with a diverse range of companies (startups, HPSUs, SMEs, large indigenous, multinationals, etc.).

According to Enterprise Ireland, "Successful collaborations often result in the Gateway becoming an extension of the company's R&D facility over time, as it partners with the business along the innovation journey towards **increased growth, sustainability and competitiveness**".

*Working with the Technology Gateway Network couldn't be easier.*

The dedicated team of Gateway Managers and Business Development staff are available to assist throughout your innovation journey. They also act as the key contact points for industry and manage the successful delivery of projects on time and within budget.



## Design+:



The **Design+** team enables companies to define and develop new products and concepts in a highly creative manner, drawing on a broad spectrum of technical, business and marketing expertise available within the Gateway at South East Technological University, Carlow.

*Email: Richard.whyte@setu.ie*

## ICS at Walton Institute:



The **ICS (Information and Communication Systems) Technology Gateway** at Walton Institute, South East Technological University (SETU) gives industry access to cutting-edge knowledge and solutions in advanced ICT software assisting companies in the transformation of an idea through to a reality.

*Email: liam.fitzgerald@waltoninstitute.ie*

## PMBRC:



The **Pharmaceutical & Molecular Biotechnology Research Centre (PMBRC)** is an applied research centre that commenced operations in 2009, consolidating research in the chemical, pharmaceutical and biotechnological sciences at South East Technological University (SETU) into one institutionally prioritised centre. Situated on the Waterford SETU campus, the centre seeks to support R&D activities within the pharmaceutical and healthcare industries, thereby allowing companies to embed R&D directly into their activities.

*Email: Niall.OReilly@setu.ie*

## SEAM Research Centre:



**SEAM (South Eastern Applied Materials)** is an ISO 9001:2015 accredited industry-focused Applied Research and Development facility based at South East Technological University in Waterford. It provides innovative materials engineering solutions for research and industrial partners seeking assistance on materials-related issues that cannot be solved by utilising their on-site resources.

*Email: ramesh.raghavendra@setu.ie*

## More about the Research Support Unit (RSU), and Technology Transfer Office (TTO)

### **SETU Research Support Unit (RSU)**

The Research Support Unit (RSU) at SETU engages with our research community to make them aware of National and European funding opportunities & related information, provides training & discussion sessions, offers advice on grant proposals, and helps build contacts at relevant conferences & events.

With the objective of submitting competitive funding proposals, we regularly invite various external experts, including National Contact Points (NCPs), to SETU for workshops.

The RSU Team provides training in grant management, as well as Open Research, Equality Diversity & Inclusion (EDI) in Research, other cross-cutting themes and compliance-related matters to researchers & innovators across all disciplines.

The RSU will drive the TU RISE initiatives in order to meet the strategic goals of the University.

✉ **Email: [Research.WD@setu.ie](mailto:Research.WD@setu.ie) or [Research.CW@setu.ie](mailto:Research.CW@setu.ie)**

✉ **Email: [TURISE@setu.ie](mailto:TURISE@setu.ie) for queries regarding TU RISE.**

### **SETU Technology Transfer Office (TTO)**

The Technology Transfer Office (TTO) was created in partnership with Enterprise Ireland to foster the commercialisation of technologies that emerge from research projects within the university. The focus of the TTO, is to ensure that these technologies are applied within the wider business community in order to enhance Ireland's competitive advantage and international reputation whilst creating sustainable jobs and contributing to our economic growth.

The Technology Transfer Office can be contacted by industry representatives and other external agencies interested in identifying SETU capabilities and exploring how SETU experts can add value to your business.

✉ **Email: [TTO@setu.ie](mailto:TTO@setu.ie)**



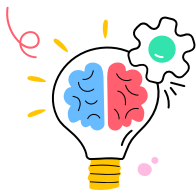
# Why engage with SETU?



**Access R&D solutions** to develop new products or services, or optimisation of a process, for business and industry.



A suite of **training supports** offered under the TU RISE initiative are aimed at assisting your business in research & innovation endeavours, including **Grant-writing workshops**, Digital Masterclasses, Professional Doctorates in Design, etc.



**Leverage the expertise** of hundreds of industry-focused researchers with specialist equipment and facilities.



We support projects of all **sizes**, from a **diverse range of companies**.

*SETU aims to drive regional development, foster innovation, build and retain the skills base in the region, and provide more opportunities for individuals and industry in the South-East.*